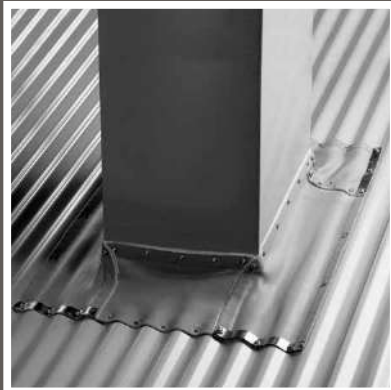


# Flashing Fixing Instructions

- Dektite Square Base • Dektite Original • Dektite Retrofit
- Dektite Soaker • Dekstrip • Dektite Combo



**DEKS**

EASY TO WORK WITH

**01275 858866**

[sales@deks.co.uk](mailto:sales@deks.co.uk)

## Dektite® Premium/Premium Ezi-Seal™/Premium Solar



**1** Trim the cone and/or cable nipple to suit pipe or cable size, using sharp tin snips.



**2** Slide down pipe or pull cable through nipple, using water as a lubricant.



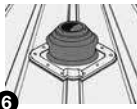
**3** Apply sealant by turning back flexible flange.



**4** Press base to the roof profile by hand. Smooth out any awkward creases. Don't fully extend to allow for vibration.



**5** Fasten using self-sealing fasteners or pop (sealed) rivets..



**6** Use a Dektite® on the 'diamond' or bias for enlarged holes and penetrations on steep pitched roofs up to 45° or deep corrugations.

**NB: For Dektite® EZI-Seal, ignore step 3.**

## Dektite® Original



**1** Cut Dektite® cone where indicated for the relevant pipe size.



**2** Slide Dektite® flashing down over pipe. Water can be used as lubricant.



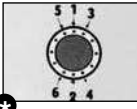
**3** Apply a neutral cure silicone sealant on underside of flange.



**4** Press pipe flashing into contours of roof panel configuration.



**5** Fasten flashing to surface with self-tapping or self-drilling screws; or sealed rivets.



**\* Fit fasteners progressively outward in pairs, ie (1,2), (3,4), (5,6) to avoid gaps.**

## Dektite® Retrofit™



**1** Trim cone to suit pipe size using sharp tin snips.



**2** With clip in downstream position, wrap top of cone around pipe and engage metal teeth in opposing pockets starting at the top.



**3** To assist locating clip into pocket, place hand behind seam. Fasten clip with pliers or multigrips, working from top to base. Do not cover crimp.



**4** Apply sealant to underside of Dektite® base and shape to roof by hand.



**5** Fasten flashing down and secure clip by placing a fastener either side of clip first.



**6** Apply sealant to top of crimp closure and any other potential leak areas.

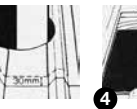
## Dektite® Diverter



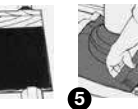
**1** Trim the cone to suit pipe size, using a sharp pair of tin snips. Not a knife.



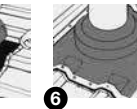
**2** Lubricate the pipe with water, slide the soaker flashing down the pipe and form to suit the roof profile.



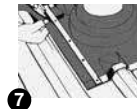
**3** Mark the outline of the soaker on the roof then remove it. mark a lap allowance of 30mm (inside the original mark). Now determine where soaker sides will finish.



**4** Remove all roof inside the 30mm line. trim off any sharp or uneven edges. timber supports must be installed to support the roof where the ribs have been removed. (Pipe removed for drawing clarity)



**5** Replace the soaker in position and apply silicone sealant to the roof while holding up the edge of the flashing.



**6** Fix self tapping screws to the middle front and middle back of the soaker and fix progressively towards the edge.

**7** Fasten side strips provided and trim excess soaker where necessary. Note: Side trimming of the soaker should be determined prior to cutting roof.

## Dekstrip® Flashing

- Always stretch Dekstrip 'hand-over-hand'**  
 Stretch a little at a time, easing the flashing over the profile.
- Never stretch Dekstrip more than 25%**  
 The encapsulated aluminium edges will expand a maximum of 25%. Once stretched, the 'waves', created will NOT return to their original shape so stretch a little at a time. Note that over-expansion makes the DEKS warranty invalid.
- Always install Dekstrip rib-side down**  
 The raised ribs running along the edges are designed to hold the sealant in place.
- Eliminate folds wherever possible**  
 Ease the flashing into position so that it lies as flat as possible against the profile.
- Avoid sharp edges and use hands to form**  
 Never use metal or wooden tools to form Dekstrip - stretch and push into position with hands only. Look out for sharp edges that may puncture the flashing.



### Square Ducts, Skylights and Chimneys

 <b>1</b>	 <b>2</b>	 <b>3</b>	 <b>4</b>	 <b>5</b>	 <b>6</b>
Remove 150mm of ribs on high side to aid water flow.	Mark flashing line no higher than 75mm above batton.	Apply sealant under line.	Measure trip for each side. Allow 200-300mm for overlap.	Fasten along top edge without stretching.	Stretch bottom edge BY HAND to follow profile. DO NOT USE TOOLS.
 <b>7</b>	 <b>8</b>	 <b>9</b>	 <b>10</b>	 <b>11</b>	 <b>12</b>
Apply sealant under bottom edge.	Fasten in valleys and rib corners as shown.	At corners, stretch top edge of each overlap and pull down. fasten top corner.	Cut away excess and overlap neatly.	Edge with strips provided or use heat gun to seal (see separate instructions).	Add sealant along edge to form ramp to slow water flow.

### Large Round Pipes

 <b>1</b>	 <b>2</b>	 <b>3</b>	 <b>4</b>	 <b>5</b>	 <b>6</b>
Mark line 150mm from valley. Apply sealant.	Position flashing, overlapping by 50mm. Fasten top edge.	Stretch lower edge to follow profile. Apply sealant along bottom edge and fix in valleys.	Seal joint by threading metal strip under overlapped joints, starting at bottom.	Temporarily fasten strip at bottom. bend strip down from top over joint.	fasten top edge. remove and replace bottom screw after forming.

 <b>7</b>	 <b>8</b>
Finish fastening using rivets to bring aluminium pieces together.	Apply sealant along overlap as necessary.

**• High Rib Profiles**  
 Dekstrip will not stretch sufficiently to cover a high rib profile when flashing a large round pipe. In this case, cut back the rib as shown

**Full instructions for Dekstrip® Flashing available in every box including how to seal with a heat gun, use as an expansion joint and other applications.**

# Fixing Kits

DEKS Fixing Kits are designed for use with the following DEKS EPDM\* and Silicone\*\* flashings.

Dektite® Square Base	DFK1	DFK2
DFE 100/200	✓	
DFE 101/201	✓	
DFE 102/202	✓	
DFE 103/203	✓	
DFE 104/204	✓	
DFE 105/205		✓
DFE 106/206		✓
DFE 107/207		✓
DFE 108/208		✓
DFE 109/209		✓

Dektite® Original	DFK1	DFK2
DF100	✓	
DF101/201	✓	
DF102/202	✓	
DF103/203	✓	
DF104/204	✓	
DF105/205		✓
DF106/206		✓
DF107/207		✓
DF108/208		✓
DF109/209		✓

Dektite® Soaker™	DFK1	DFK2
DF602		✓
DF603		✓
DF605		✓
DF606	✓	✓

Dektite® Retrofit™	DFK1	DFK2
RF801	✓	
RF802	✓	
RF803	✓	
RFS4		✓

Dekstrip®				
Code No.	Width mm	Length m	DFK1	DFK2
DS23-180	180	23		✓ (x6)
DS10-235	235	10		✓ (x3)
DS10-305	305	10		✓ (x3)
DS15-450	450	15		✓ (x4)

Dektite® Combo	DFK1	DFK2
DC 101/201	✓	
DC 102/202	✓	
DC 103/203	✓	
DC 104/204	✓	
DC 105/205		✓
DC 106/206		✓
DC 107/207		✓
DC 108/208		✓
DC 109/209		✓
DC 110		✓

\*E.P.D.M. withstands temperatures from -50°C to 115°C & up to 150°C intermittently

\*\*Silicone withstands temperatures from -50°C to 200°C & up to 250°C intermittently

## Kit Contents

DFK1
1 x 75ml tube of Silicone 25 x self-drilling screws 25 x colour caps (silver) 1 x fixing instruction leaflet

DFK2
3 x 75ml tube of Silicone 75 x self-drilling screws 75 x colour caps (silver) 1 x fixing instruction leaflet

# DEKS

EASY TO WORK WITH

DeKS Industries Europe Ltd., West End Trading Estate, Blackfriars Road, Nailsea, Bristol BS48 4DJ.

Tel: 01275 858866 sales@deks.co.uk www.deks.co.uk

© Dektite, Dekstrip, DEKS are registered trademarks of DEKS Industries Pty Ltd 2008 © DEKS Industries PTY Ltd

November 2017 I-FLASH UK

